

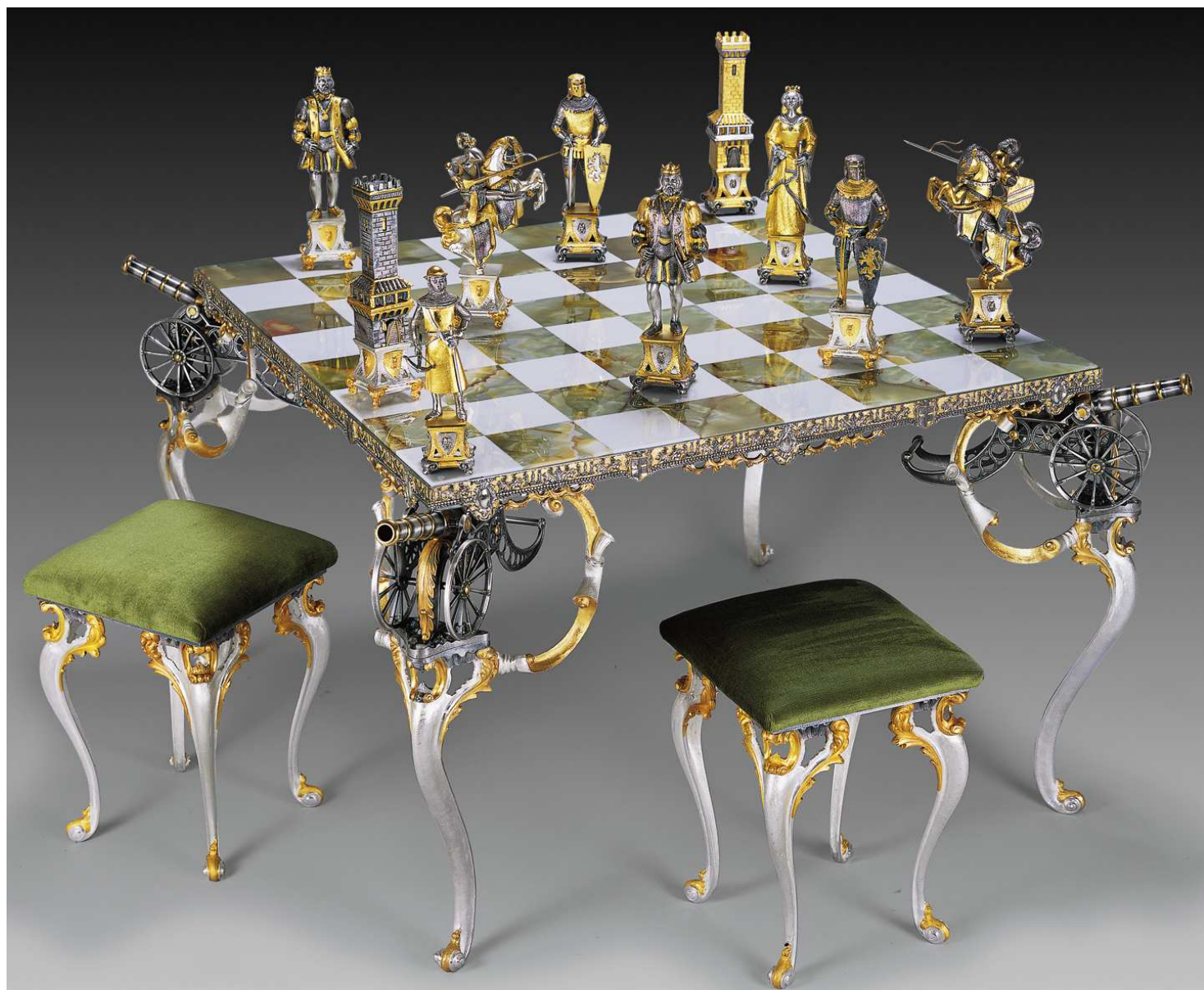


- K 847CM** -SCACCHI(CHESS MEN) “**romani vs egiziani**” MISURA RE/KING SIZE:ht.15cm Base 6cm  
MADE IN BRONZE 24K GOLD PLATED
- K 947TAV** -TAVOLO(CHESS TABLE) - ht.68cm Top.60x60cm square 7,5cm  
MADE IN ONIX AND BRONZE 24K GOLD PLATED
- K947ST** -SGABELLO(STOOL) - ht.50cm Top.33x33cm  
MADE IN BRONZE 24K GOLD PLATED



- K 843CM** -SCACCHI(CHESS MEN) “carolingi vs mori” MISURA RE/KING SIZE:ht.27cm Base 8cm  
MADE IN BRONZE 24K GOLD PLATED
- K 943TAV** -TAVOLO(CHESS TABLE) - ht.60cm Top.130x83cm square 10cm  
MADE IN ONIX AND BRONZE 24K GOLD PLATED
- K943ST** -SGABELLO(STOOL) - ht.50cm Top.33x33cm  
MADE IN BRONZE 24K GOLD PLATED





- K 844CM** -SCACCHI(CHESS MEN) “cavalieri medioevali” MISURA RE/KING SIZE:ht.32cm Base 11cm  
MADE IN BRONZE 24K GOLD PLATED
- K 945TAV** -TAVOLO(CHESS TABLE) - ht.73cm Top.126x126cm square 13cm  
MADE IN ONIX AND BRONZE 24K GOLD PLATED
- K941ST** -SGABELLO(STOOL) - ht.50cm Top.33x33cm  
MADE IN BRONZE 24K GOLD PLATED





**K 842CM** -SCACCHI(CHESS MEN) “**Luigi XIV**” MISURA RE/KING SIZE:ht.22cm Base 11cm  
MADE IN BRONZE 24K GOLD PLATED

**K 942TAV** -TAVOLO(CHESS TABLE) - ht.60cm Top.130x83cm square 13cm  
MADE IN ONIX AND BRONZE 24K GOLD PLATED

**K941ST** -SGABELLO(STOOL) - ht.50cm Top.33x33cm  
MADE IN BRONZE 24K GOLD PLATED